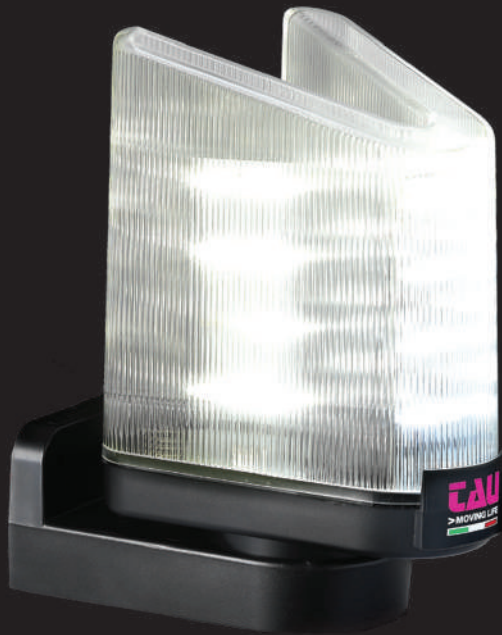


VLED



FEATURES:

- available in different supply voltages: 230 V AC and DC
- 433.92 MHz antenna integrated in all versions
- possibility of fixing to the wall using a special support included

PROS:

- it is also visible on sunny days due to the use of 12 high efficiency LEDs
- pre-installed antenna inside the flashing light protected by vandalism
- practical and flexible it can rotate up to 360 ° when installed using the included standard support
- specific design prevents breakage or damage from atmospheric agents

900VLED

Low voltage 12-18-24 Volt white led flashing light for TAU electronic control boards.

900VLED-O

Low voltage 12-18-24 Volt orange led flashing light for TAU electronic control boards.

900VLED-AT

230 V AC white led flashing light for TAU electronic control boards or for universal use.

900VLED-ATO

230 V AC orange led flashing light for TAU electronic control boards or for universal use.

TECHNICAL DRAWINGS

